

# oventrop

## OV Fan Coil Package

Pressure independent control package  
for variable flow systems



# oventrop

**Pressure rating:** 232 PSI

**Temperature range:** 14 °F to 212 °F

**Size:** 3/4"

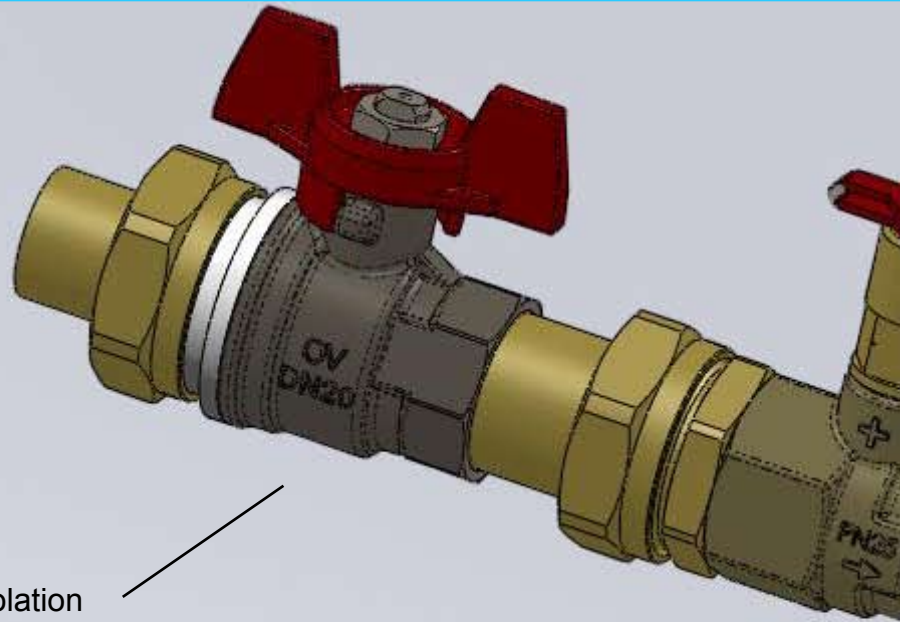
**Flow range:** 0.66 to 4.6 GPM

**Differential pressure range:** 5 to 58 PSI

**Actuator connection:** M30x1.5

**Supply side length:** 10.5 inches

**Return side length:** 8 inches



Isolation  
ball valves

Fill and drain port  
with shut-off ball valve

Actuator connection



**Accessory hose kits:**

**Lengths:**  
18", 24", 30", 36"

**Materials:**  
– 304 stainless steel braided EPDM  
rubber construction

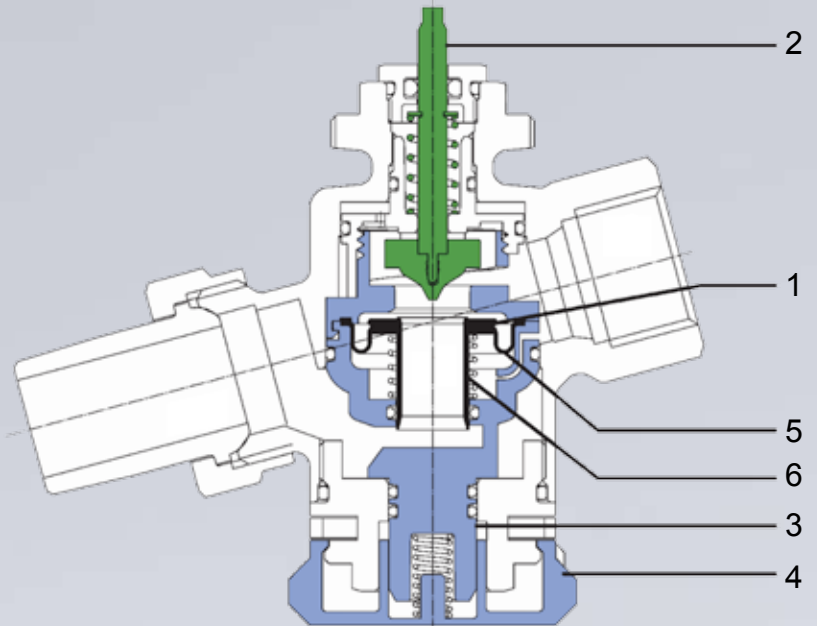


The balancing valve unit hand wheel can be set, locked, and adjusted in the field without any tools.

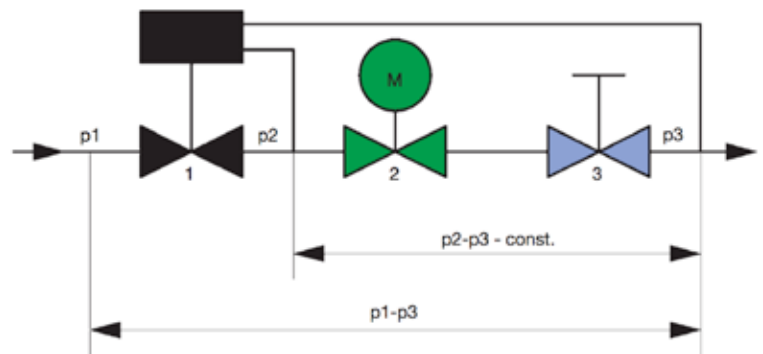
# OV Fan Coil Package



Pressure independent control valve "Cocon Q"



- |                          |                |
|--------------------------|----------------|
| 1 - Diaphragm unit       | 4 - Hand wheel |
| 2 - Regulating valve     | 5 - Diaphragm  |
| 3 - Balancing valve unit | 6 - Sleeve     |



## Three valves in one unit

The integrated diaphragm unit (1) acts as a differential regulator and guarantees a constant differential pressure ("p2" – "p3") across the second valve section (regulating valve activated through the actuator or temperature controller (2) and across the third section, the on-site adjustable, automatic balancing valve unit (3).

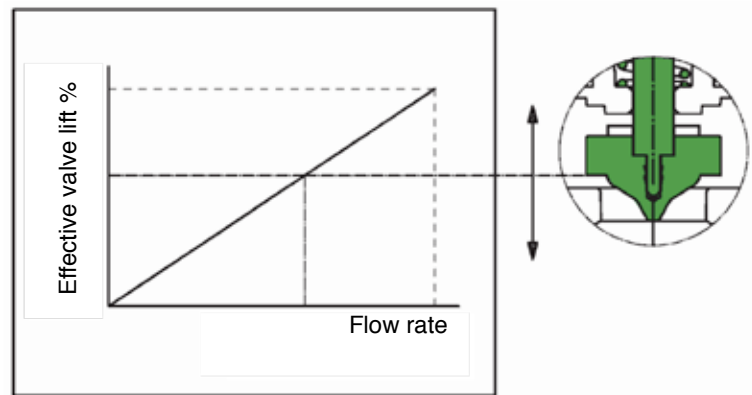
Even at high differential pressure variations "p1" – "p3" during partial load conditions, the differential pressure "p2" – "p3" is kept at a constant level. This way, 100% valve authority is maintained.

Actuators						
Item number	101 24 96	101 28 16	101 28 26	101 29 51	101 27 00	101 27 01
Model	Electrothermal, N.C., with end switch	Electrothermal, N.C.	Electrothermal, N.O.	Electrothermal, N.C.	Electromotive	
Operating current	24 V					
Operating behavior (control signal)	2-point			0-10 V	0-10 V, 0-5 V, 5-10 V	Floating (3-point)
Interface	Digital			Analog		Digital
Lower lift position [inch / mm]	0.44 / 11.2					
Upper lift position [inch / mm]	0.60 / 15.2			0.57 / 14.5	0.62 / 15.7	
Piston stroke [inch / mm]	-			0.01 / 2.5	0.18 / 4.5	-
Operating force [lbf]	> 20.2					
Medium floating time	~ 4.5 minutes			~ 60 s/mm	~ 15 s/mm	
Maximum fluid temperature [F]	212				203	
Permissible installation position	Any			Any, but not upside down		

### Actuator characteristic line

101 24 96	
101 28 16	
101 28 26	
101 29 51	
101 27 00	
101 27 01	

### Valve characteristic line



### Oventrop Corporation

PO Box 789  
29 Kripes Road  
East Granby, CT 06026

PH: (860) 413-9173

FX: (860) 413-9436

Web: [www.oventrop-us.com](http://www.oventrop-us.com)